

# CURREY & COMPANY | DELPHOS

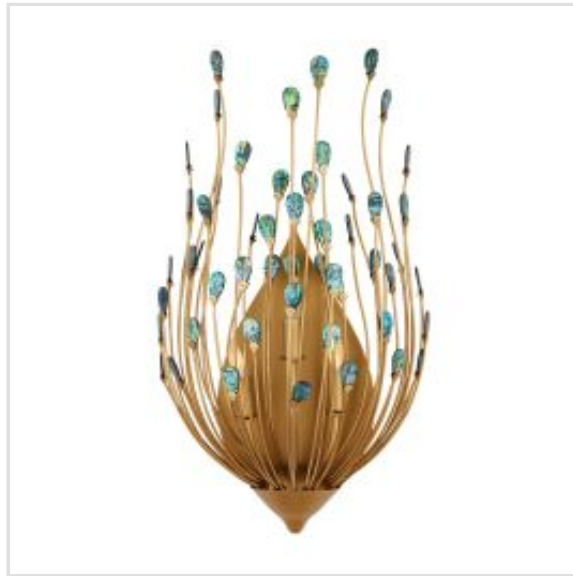
The teardrop-shaped Delphos Chandelier is inspired by birds and feathers; the fixture flows gracefully and evokes the elegance of a peacock's tail. Beautifully crafted from steel in a contemporary gold finish, the nature-inspired piece is ornamented with double-sided, highly polished New Zealand Paua Shells. This is a painstaking piece to realize, as the rods are bent by hand into the undulant composition and the luminous shells are hand-placed. The turquoise and gold chandelier will bring lively color to an interior thanks to the variations in the iridescent hues within each of the ornamenting shells.

**BRAND**

Currey & Company

**GUARANTEE**

Standard 2 Year  
Guarantee



**QNC-DELPHOS-3WB-GD**

Delphos 3 It Wall Light - Contemporary Gold / Natural