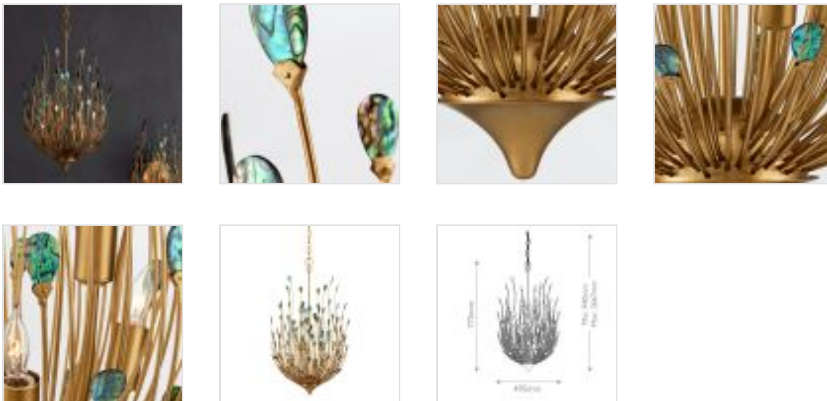


QNC-DELPHOS-6P-GD

Delphos 6 Lt Chandelier - Contemporary Gold / Natural

| DETAILS | |
|-------------------|--------------------------------------|
| BRAND | Currey & Company |
| FAMILY | Delphos |
| SUITABLE LOCATION | Interior |
| GUARANTEE | Standard 2 Year Guarantee |
| FINISH | Contemporary Gold / Natural |
| FITTING HEIGHT | 775mm |
| DIAMETER | 495mm |
| MINIMUM DROP | 940mm |
| MAXIMUM DROP | 2667mm |
| POWER SOURCE | Mains Voltage |
| VOLTAGE | 220-240v 50hz |
| MAXIMUM WATTAGE | 60W |
| NUMBER OF LAMPS | 6 |
| SOCKET | E14 |
| INTEGRATED LED | No |
| CLASS | Class I |
| BUILD MATERIALS | Wrought Iron, New Zealand Paua Shell |
| DIMMABLE FITTING | Compatible With Dimmable Lamps |
| PRODUCT WEIGHT | 5.45kg |
| BOX DIMENSIONS | 60.96 X 60.96 X 96.52cm |
| BOX WEIGHT | 11.36 Kg |



PRODUCT DETAILS

The teardrop-shaped Delphos Chandelier is inspired by birds and feathers; the fixture flows gracefully and evokes the elegance of a peacock's tail. Beautifully crafted from steel in a contemporary gold finish, the nature-inspired piece is ornamented with double-sided, highly polished New Zealand Paua Shells. This is a painstaking piece to realize, as the rods are bent by hand into the undulant composition and the luminous shells are hand-placed. The turquoise and gold chandelier will bring lively color to an interior thanks to the variations in the iridescent hues within each of the ornamenting shells.



Quintiesse
 (Part of Elstead Lighting Group)
 Elstead House
 Mill Lane
 Alton, GU34 2QJ,
 United Kingdom

Phone
 +44 (0) 1420 82377

Email
 enquiries@quintiesse.com