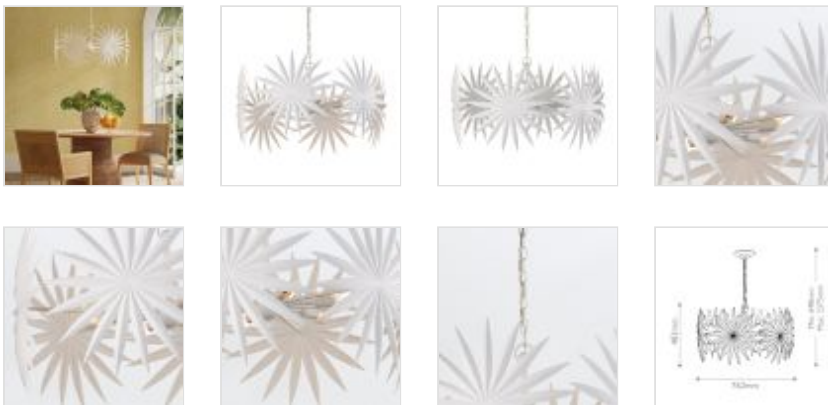




QNC-BISMARKIA-6P-WH

Bismarkia 6 Lt Small Chandelier - Gesso White

DETAILS	
BRAND	Currey & Company
FAMILY	Bismarkia
SUITABLE LOCATION	Interior
GUARANTEE	Standard 2 Year Guarantee
FINISH	Gesso White
FITTING HEIGHT	483mm
DIAMETER	762mm
MINIMUM DROP	648mm
MAXIMUM DROP	2375mm
POWER SOURCE	Mains Voltage
VOLTAGE	220-240v 50hz
MAXIMUM WATTAGE	60W
NUMBER OF LAMPS	6
SOCKET	E14
INTEGRATED LED	No
CLASS	Class I
BUILD MATERIALS	Steel
DIMMABLE FITTING	Compatible With Dimmable Lamps
PRODUCT WEIGHT	6.36kg
BOX DIMENSIONS	91.44 X 81.28 X 55.88cm
BOX WEIGHT	15.00 Kg



PRODUCT DETAILS

The Bismarkia collection was inspired by the noble Bismarkia palm, with its oversized fronds. Marjorie Skouras, who designed the chandelier, has stayed true to her love of nature for this creation. Her passion for the Yucatan, the surroundings in which she lives and through which she translates the flora and fauna into dynamic products in her studio, shines in these steel fixtures covered in gesso white. The spiky ornamentations that splay around the bulbs bring immediate texture to the white chandelier.



Quintiesse
 (Part of Elstead Lighting Group)
 Elstead House
 Mill Lane
 Alton, GU34 2QJ,
 United Kingdom

Phone
 +44 (0) 1420 82377

Email
 enquiries@quintiesse.com