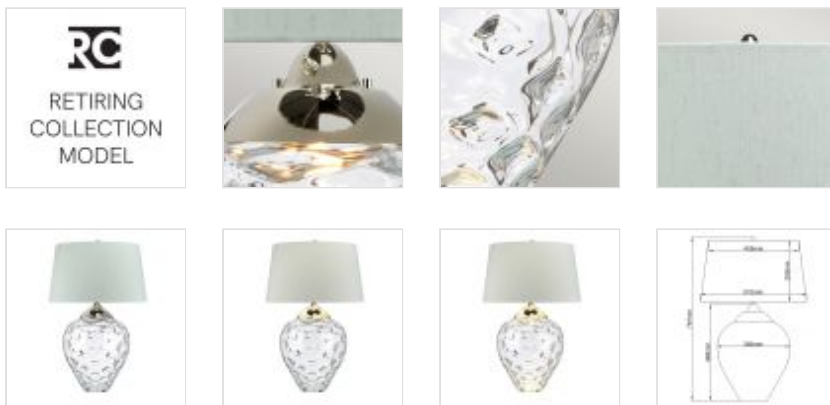




**QN-SAMARA-TL-LRG-CLR**

Samara Large Table Lamp - Clear - Polished Nickel

| DETAILS           |                                      |
|-------------------|--------------------------------------|
| BRAND             | Quintiesse                           |
| FAMILY            | Samara                               |
| SUITABLE LOCATION | Interior                             |
| GUARANTEE         | General 2 Year Guarantee             |
| FINISH            | Polished Nickel                      |
| FITTING HEIGHT    | 787mm                                |
| DIAMETER          | 510mm                                |
| POWER SOURCE      | Plug                                 |
| VOLTAGE           | 220-240v 50hz                        |
| MAXIMUM WATTAGE   | 60W                                  |
| NUMBER OF LAMPS   | 1                                    |
| SOCKET            | E27                                  |
| INTEGRATED LED    | No                                   |
| LED LUMENS        | 620Lm                                |
| LED COLOUR TEMP   | 3000k                                |
| CLASS             | Class I                              |
| BUILD MATERIALS   | Steel, Clear Glass, Faux Silk        |
| SHADE MATERIAL    | Faux Silk                            |
| HOURS             | 25000                                |
| DIMMABLE FITTING  | Compatible With Dimmable Smart Lamps |
| PRODUCT WEIGHT    | 7.02kg                               |
| BOX DIMENSIONS    | 54 X 54 X 78cm                       |
| BOX WEIGHT        | 7.80 Kg                              |



**PRODUCT DETAILS**

Samara's large Clear textured blown glass, classic polished nickel metal-work and beautiful hand-made fabric shades combine to form an arresting and gorgeous table-lamp. Combined with a 4-way switch, this design features independent light sources for the shade and the glass. (GU10 supplied in the base). Chateau duck egg faux silk shade ref LSUK046.



**Quintiesse**  
 (Part of Elstead Lighting Group)  
 Elstead House  
 Mill Lane  
 Alton, GU34 2QJ,  
 United Kingdom

**Phone**  
 +44 (0) 1420 82377

**Email**  
 enquiries@quintiesse.com