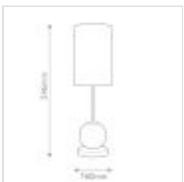
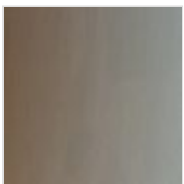


QN-MARNI-TL-M-NBR**Marni Medium LED Table Lamp - Natural Brass****DETAILS**

BRAND	Alora
FAMILY	Marni
SUITABLE LOCATION	Interior
GUARANTEE	Standard 2 Year Guarantee
FINISH	Natural Brass
FITTING HEIGHT	546mm
DIAMETER	160mm
POWER SOURCE	Mains Voltage
VOLTAGE	220-240v 50hz
MAXIMUM WATTAGE	10W (1 X 8W And 1 X 2W)
NUMBER OF LAMPS	2
SOCKET	LED
INTEGRATED LED	Yes
LED LUMENS	880LM
LED COLOUR TEMP	3300K
CLASS	Class I
BUILD MATERIALS	Steel, Clear Carved Acrylic, White Linen
SHADE MATERIAL	Clear Carved Acrylic And Cream Linen
HOURS	50,000 Hours
PRODUCT WEIGHT	2.3kg
BOX DIMENSIONS	62.5 X 22.5 X 23.5cm
BOX WEIGHT	2.90 Kg

**PRODUCT DETAILS**

The Marni collection adds luxury and interest to any design. Meticulously cut spherical shades create glittering beams of illumination throughout the design. Finished in Natural Brass with a Cream Linen Shade. Lamp illuminates both from within the shade and the cut crystal base.

Phone

+44 (0) 1420 82377

Email

enquiries@quintiesse.com

QN
QUINTIESSE

Quintiesse
Elsland House
Mill Lane
Alton, GU34 2QJ,
United Kingdom