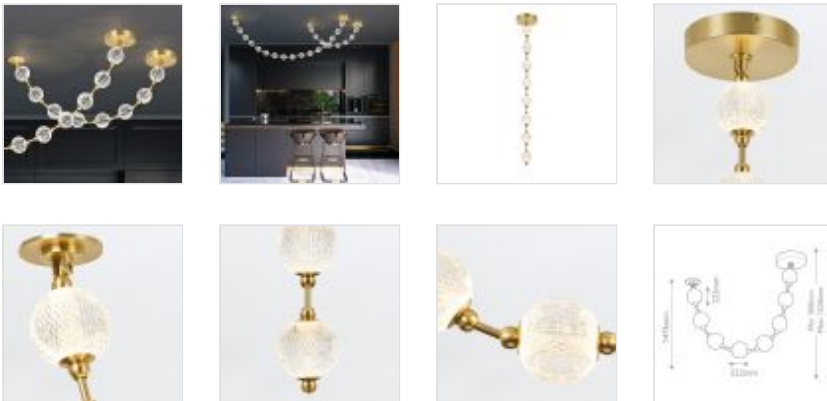


QN-MARNI-8P-148-NBR

Marni 8 Head LED Pendant - Natural Brass



DETAILS	
BRAND	Alora
FAMILY	Marni
SUITABLE LOCATION	Interior
GUARANTEE	Standard 2 Year Guarantee
FINISH	Natural Brass
FITTING HEIGHT	1476mm
DIAMETER	222mm
MINIMUM DROP	500mm
MAXIMUM DROP	1526mm
POWER SOURCE	Mains Voltage
VOLTAGE	220-240v 50hz
MAXIMUM WATTAGE	37.5W
SOCKET	LED
INTEGRATED LED	Yes
LED LUMENS	2280LM
LED COLOUR TEMP	3000K
CLASS	Class I
BUILD MATERIALS	Aluminum, Steel, Clear Carved Acrylic
HOURS	50,000 Hours
DIMMABLE FITTING	Dimmable
PRODUCT WEIGHT	9.5kg
BOX DIMENSIONS	79 X 79 X 18.5cm
BOX WEIGHT	11.90 Kg



## PRODUCT DETAILS

Like a gorgeously beaded garment, the Marni collection adds luxury and interest to any design. Meticulously cut-acrylic shades create glittering beams of illumination throughout the design. Finished in Natural Brass.



**Quintiesse**  
(Part of Elstead Lighting Group)  
Elstead House  
Mill Lane  
Alton, GU34 2QJ,  
United Kingdom

**Phone**  
+44 (0) 1420 82377

**Email**  
enquiries@quintiesse.com