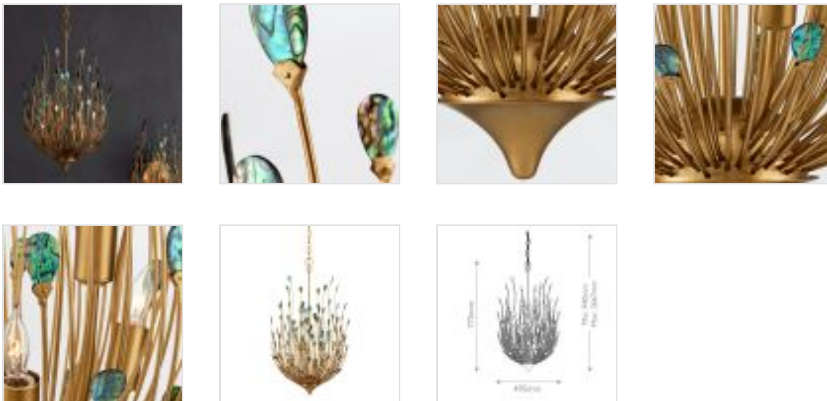


QNC-DELPHOS-6P-GD

Delphos 6 Lt Chandelier - Contemporary Gold / Natural

DETAILS	
BRAND	Currey & Company
FAMILY	Delphos
SUITABLE LOCATION	Interior
GUARANTEE	Standard 2 Year Guarantee
FINISH	Contemporary Gold / Natural
FITTING HEIGHT	775mm
DIAMETER	495mm
MINIMUM DROP	940mm
MAXIMUM DROP	2667mm
POWER SOURCE	Mains Voltage
VOLTAGE	220-240v 50hz
MAXIMUM WATTAGE	60W
NUMBER OF LAMPS	6
SOCKET	E14
INTEGRATED LED	No
CLASS	Class I
BUILD MATERIALS	Wrought Iron, New Zealand Paua Shell
DIMMABLE FITTING	Compatible With Dimmable Lamps
PRODUCT WEIGHT	5.45kg
BOX DIMENSIONS	60.96 X 60.96 X 96.52cm
BOX WEIGHT	11.36 Kg



PRODUCT DETAILS

The teardrop-shaped Delphos Chandelier is inspired by birds and feathers; the fixture flows gracefully and evokes the elegance of a peacock's tail. Beautifully crafted from steel in a contemporary gold finish, the nature-inspired piece is ornamented with double-sided, highly polished New Zealand Paua Shells. This is a painstaking piece to realize, as the rods are bent by hand into the undulant composition and the luminous shells are hand-placed. The turquoise and gold chandelier will bring lively color to an interior thanks to the variations in the iridescent hues within each of the ornamenting shells.



Quintiesse
 (Part of Elstead Lighting Group)
 Elstead House
 Mill Lane
 Alton, GU34 2QJ,
 United Kingdom

Phone
 +44 (0) 1420 82377

Email
 enquiries@quintiesse.com