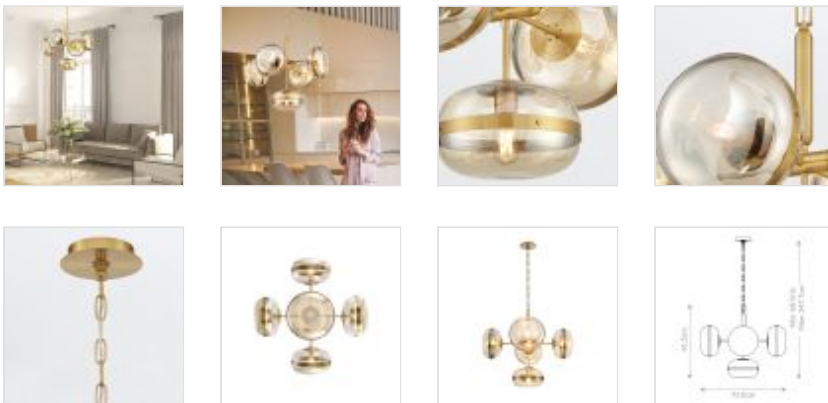


**QN-NOTTINGHAM-5P-AB**

Nottingham 5 Lt Pendant chandelier - Antique Brass

DETAILS	
BRAND	Eurofase
FAMILY	Nottingham
SUITABLE LOCATION	Interior
GUARANTEE	Standard 2 Year Guarantee
FINISH	Antique Brass
FITTING HEIGHT	615mm
DIAMETER	710mm
MINIMUM DROP	685mm
MAXIMUM DROP	2477mm
POWER SOURCE	Mains Voltage
VOLTAGE	220-240v 50hz
MAXIMUM WATTAGE	40W
NUMBER OF LAMPS	5
SOCKET	E27
INTEGRATED LED	No
CLASS	Class I
BUILD MATERIALS	Steel, Tinted Glass
SHADE MATERIAL	Glass
DIMMABLE FITTING	Dimmable
PRODUCT WEIGHT	4.6kg
BOX DIMENSIONS	Box1: 46 X 46 X 33cm (20.28kg) / Box2: 32 X 32 X 23cm
BOX WEIGHT	20.28 Kg



**PRODUCT DETAILS**

A band encircles each glass orb that beautifully reflects a warm glow from the vintage lights within. The metal support creates an inviting counterpoint to the austere design.



**Quintiesse**  
 (Part of Elstead Lighting Group)  
 Elstead House  
 Mill Lane  
 Alton, GU34 2QJ,  
 United Kingdom

**Phone**  
 +44 (0) 1420 82377

**Email**  
 enquiries@quintiesse.com