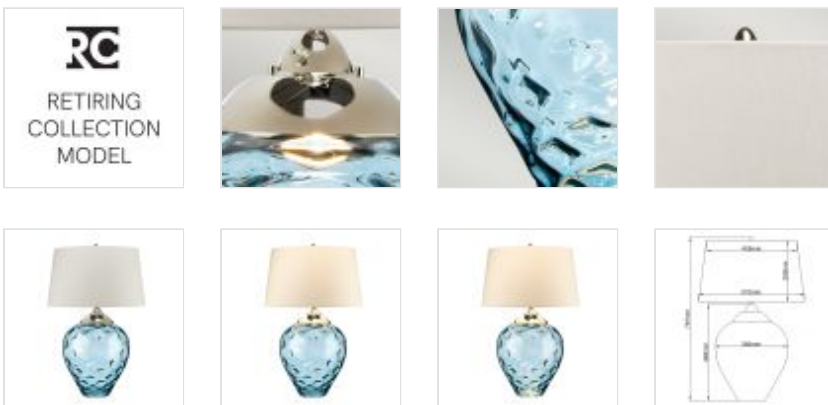




QN-SAMARA-TL-LRG-BLU
 Samara Large Table Lamp - Light Blue -
 Polished Nickel

DETAILS	
BRAND	Quintiesse
FAMILY	Samara
SUITABLE LOCATION	Interior
GUARANTEE	General 2 Year Guarantee
FINISH	Polished Nickel
FITTING HEIGHT	787mm
DIAMETER	510mm
POWER SOURCE	Plug
VOLTAGE	220-240v 50hz
MAXIMUM WATTAGE	60W
NUMBER OF LAMPS	1
SOCKET	E27
INTEGRATED LED	No
LED LUMENS	620Lm
LED COLOUR TEMP	3000k
CLASS	Class I
BUILD MATERIALS	Steel, Clear Glass, Faux Silk
SHADE MATERIAL	Faux Silk
HOURS	25000
DIMMABLE FITTING	Compatible With Dimmable Smart Lamps
PRODUCT WEIGHT	7.02kg
BOX DIMENSIONS	54 X 54 X 78cm
BOX WEIGHT	7.80 Kg



PRODUCT DETAILS

Samara's large Blue textured blown glass, classic polished nickel metal-work and beautiful hand-made fabric shades combine to form an arresting and gorgeous table-lamp. Combined with a 4-way switch, this design features independent light sources for the shade and the glass. (GU10 supplied in the base). Scallop taupe faux silk shade ref LSUK044.



Quintiesse
 (Part of Elstead Lighting Group)
 Elstead House
 Mill Lane
 Alton, GU34 2QJ,
 United Kingdom

Phone
 +44 (0) 1420 82377

Email
 enquiries@quintiesse.com