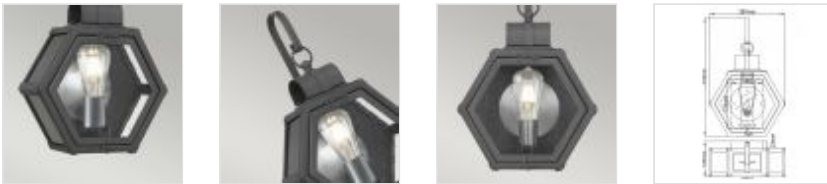


QN-HEATH-S-MB

Heath 1 Light Small Wall Lantern - Mottled Black

**DETAILS**

BRAND	Quoizel
FAMILY	Heath
SUITABLE LOCATION	Exterior
GUARANTEE	3 Year Anti Corrosion Guarantee
IP RATING	IP44
FINISH	Mottled Black
FITTING HEIGHT	418mm
WIDTH	267mm
PROJECTION/DEPTH	125mm
POWER SOURCE	Mains Voltage
VOLTAGE	220-240v 50hz
MAXIMUM WATTAGE	40W
NUMBER OF LAMPS	1
SOCKET	E27
INTEGRATED LED	Yes
BUILD MATERIALS	Aluminium, Brass, Steel, Clear Seeded Glass
SHADE MATERIAL	Glass
DIMMABLE FITTING	Compatible With Dimmable Lamps
PRODUCT WEIGHT	1.8kg
BOX DIMENSIONS	34 X 20 X 41cm
BOX WEIGHT	2.60 Kg

**PRODUCT DETAILS**

Meet hexagonal, handsome Heath. This visually intriguing suspended lantern features an aluminum and clear seeded glass cage; a domed roof and curved arm complete this interesting two-piece construction. Finished in Mottled Black, Heath exudes charm and would be a great addition to a rustic setting. IP44 rated.